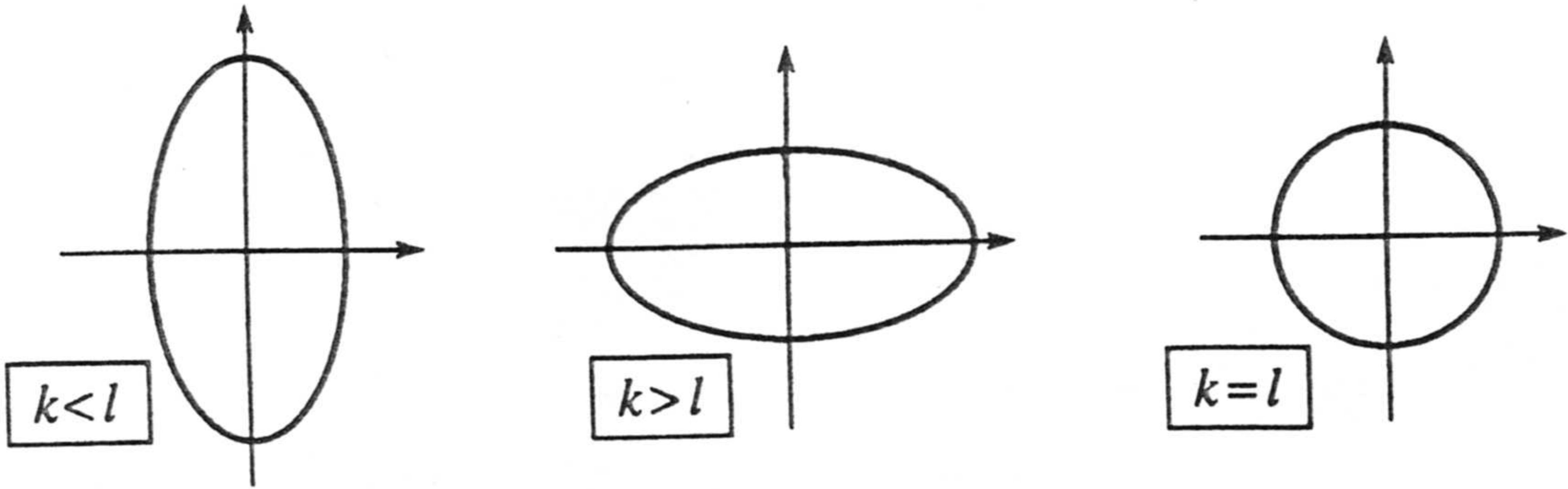
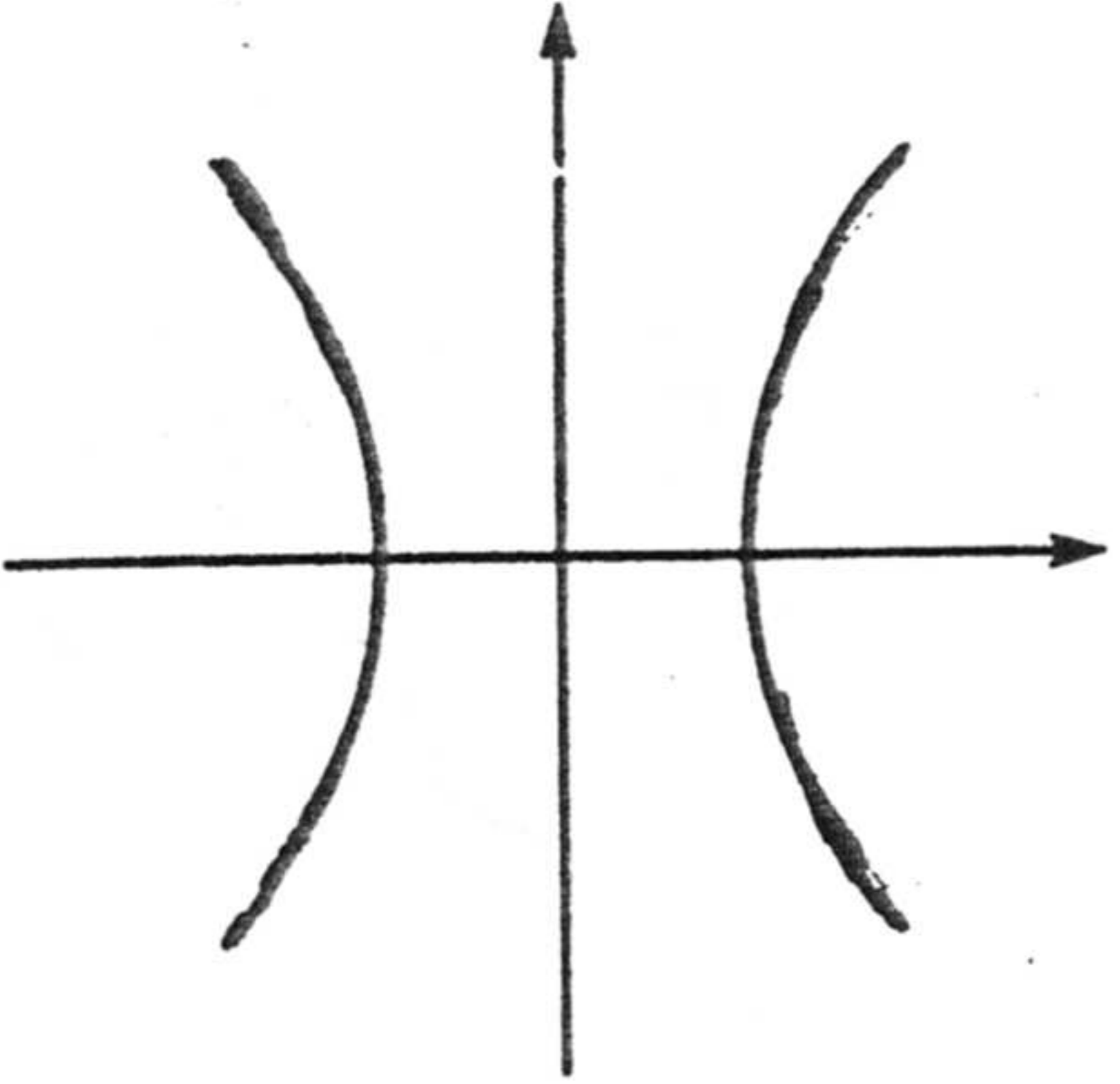


Figure 1 Non-degenerate conics in standard position

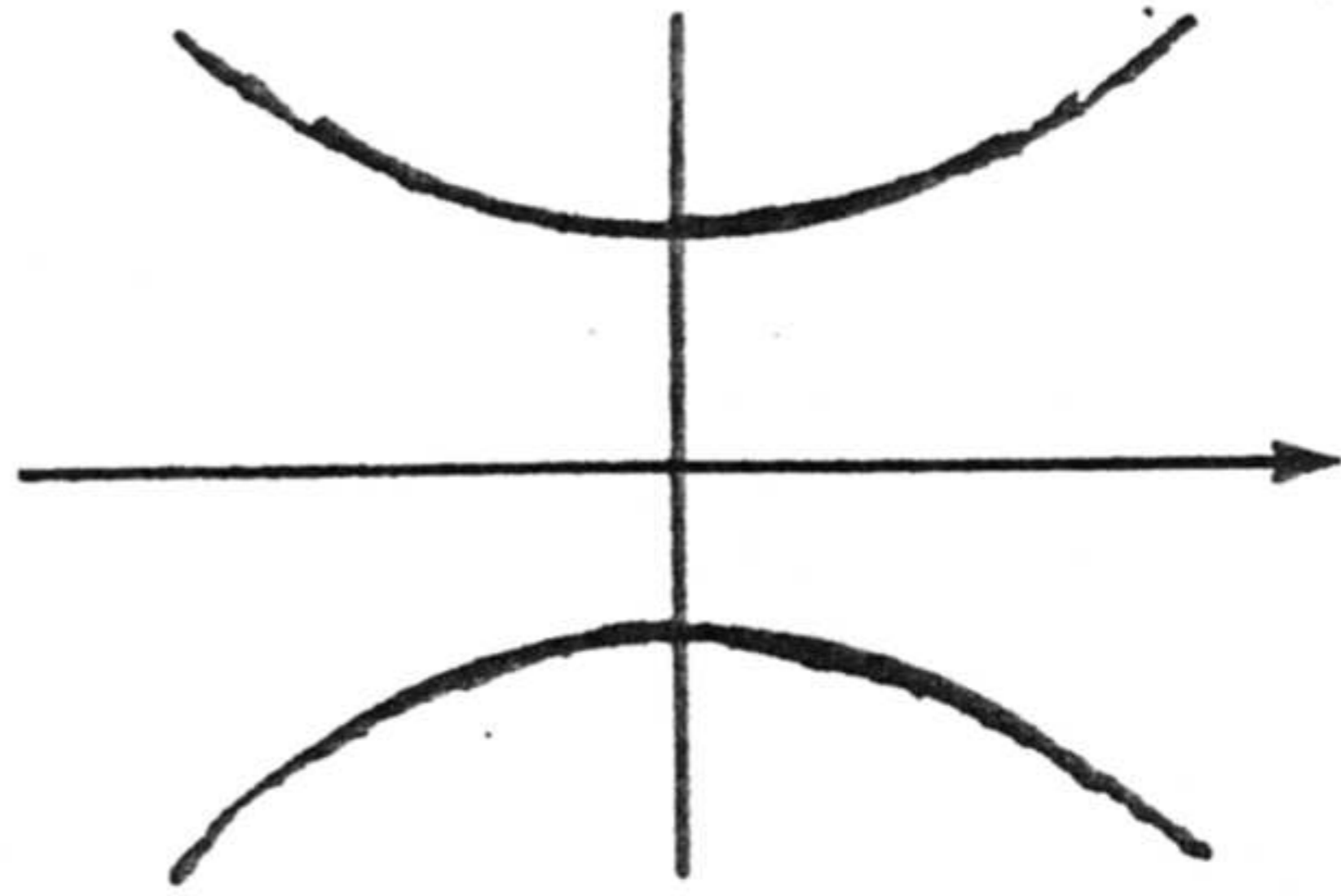


Ellipse

$$\frac{x^2}{k^2} + \frac{y^2}{l^2} = 1, \quad k, l > 0$$

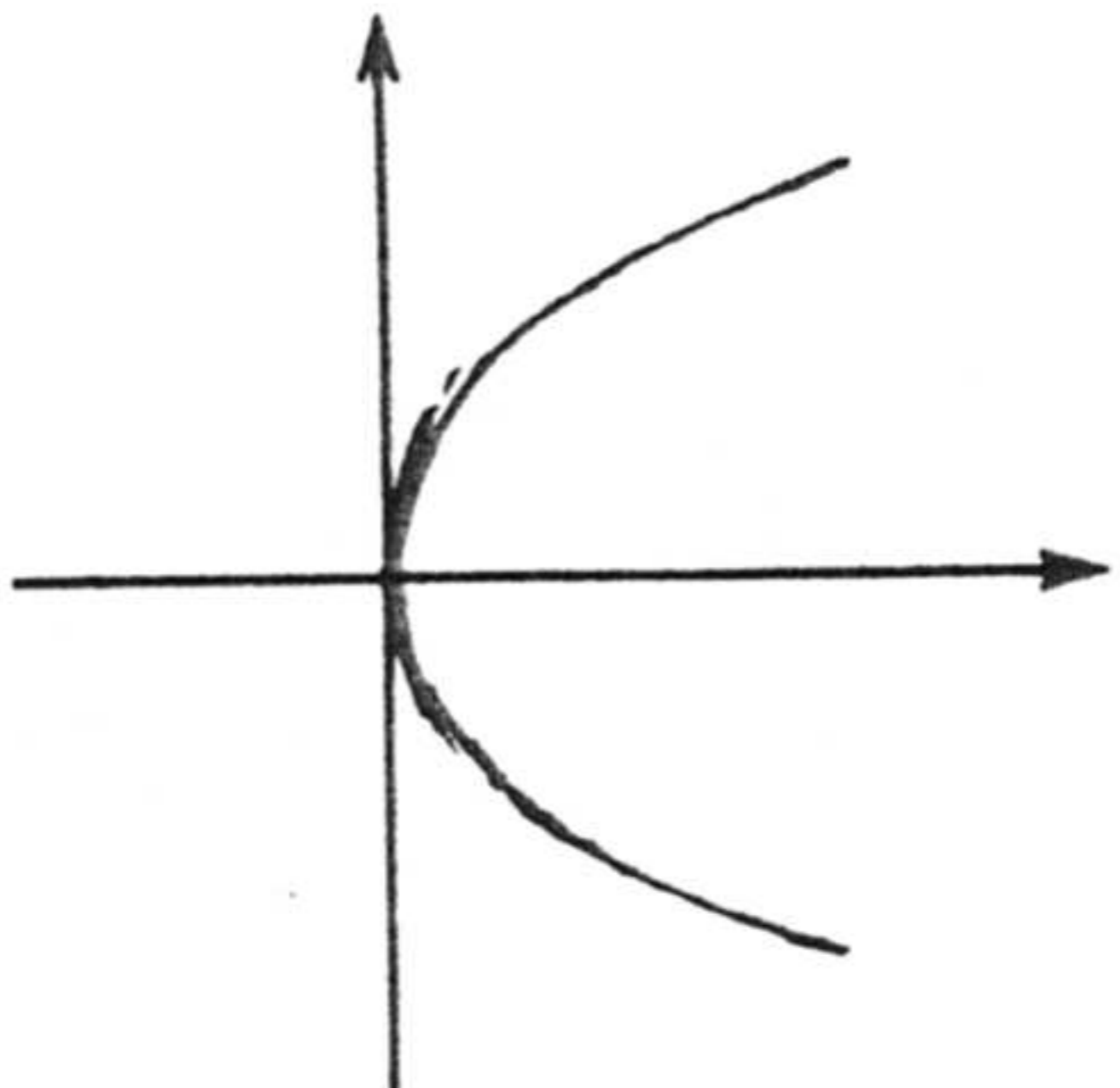


$$\frac{x^2}{k^2} - \frac{y^2}{l^2} = 1, \quad k, l > 0$$

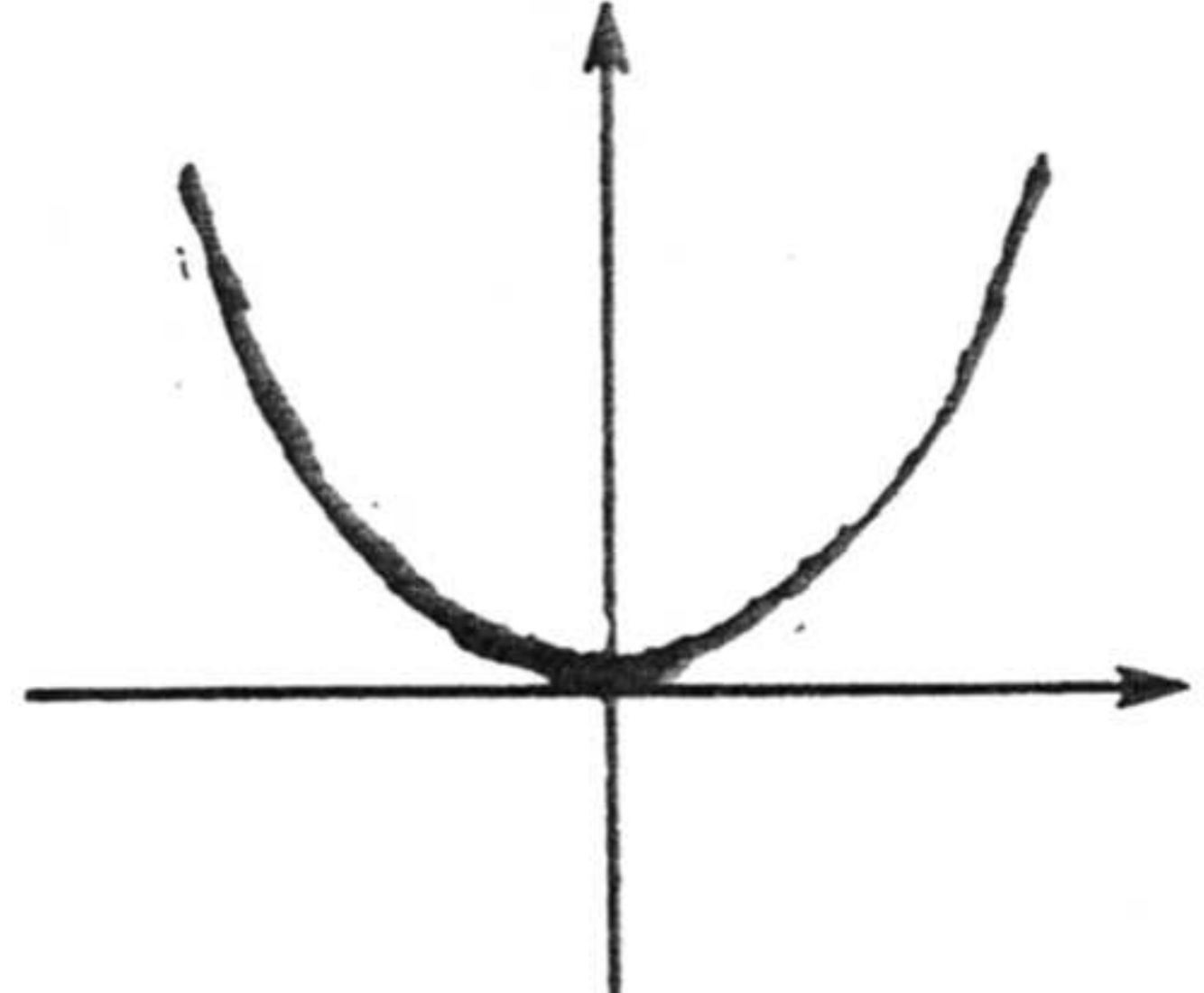


$$\frac{y^2}{k^2} - \frac{x^2}{l^2} = 1, \quad k, l > 0$$

Hyperbola



$$y^2 = kx, \quad k > 0$$



$$x^2 = ky, \quad k > 0$$