

CRATAEGUS

Vessels typically small, mean tangential diameter less than $100\ \mu$, exclusively solitary. Spiral thickening is present in most spp. Perforations usually exclusively simple, but a few scattered forminate or reticulate plates occur in some spp. Intervascular pitting typically alternate, never large. Pits to ray cells similar to intervascular pits. Mean member length of mature material about 0.4-0.95 mm. but range including small stems is 0.19-0.76 mm. with mean of 0.487 mm.

Parenchyma usually apotracheal only, in scattered cells or short uniseriate lines from ray to ray.

Rays multiseriate, mostly 2-5 cells wide, sometimes of two distinct widths. Uniseriates rather few and composed entirely of procumbent cells in woods with homogeneous rays (i.e. Crataegus). Typically 9-15 rays per mm. Homogeneous (Kribs's Type I).

Fibres with numerous distinctly bordered pits, equally numerous on both tangential and radial walls, except in the Pomoideae and some spp. of Spiraea. Walls thin to thick, often radially flattened and with thicker walls towards the end of the growth ring. Spiral thickening observed or reported in some spp. Mean length 0.9-1.6 mm.

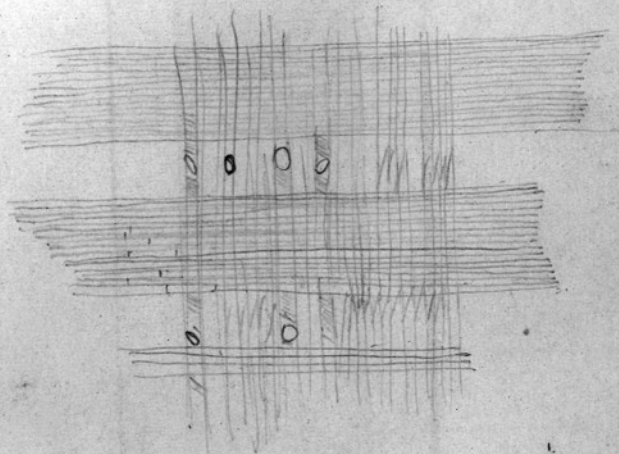
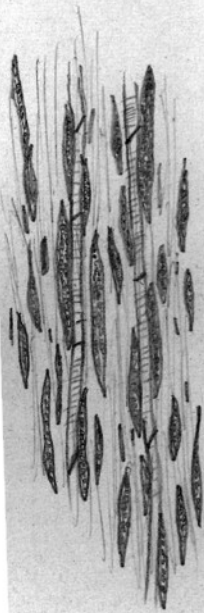
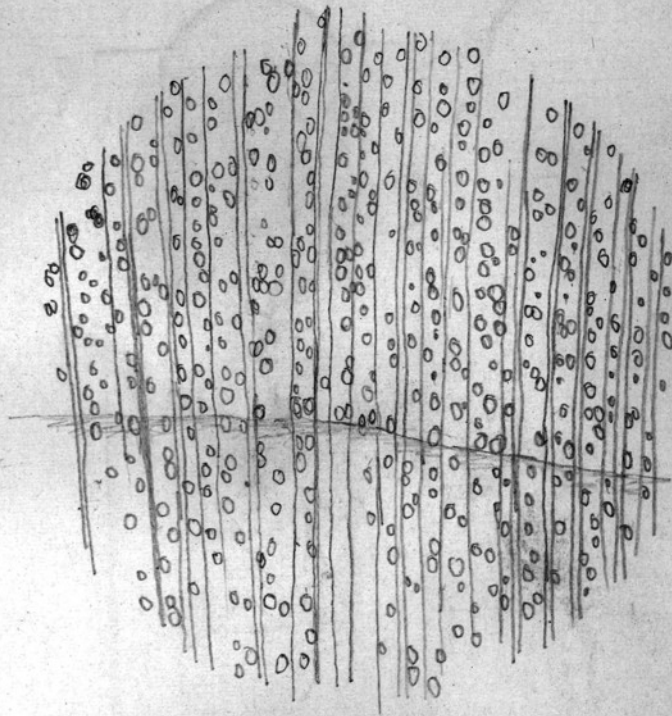
Crataegus Azafolus L.

Diffuse-porous. Pores solitary; very small, maximum tangential diameter $50\ \mu$; numerous and crowded. Vessels with simple perforations; pits alternate, medium sized; spiral thickenings not observed. Wood parenchyma diffuse and in short uniseriate lines. Rays homogeneous; 1 to 4 cells wide; less than 25 cells high; ray-vessel pitting medium sized, short oval in outline. Fibres with numerous large distinctly bordered pits. (Ilanoth Specimen No. 55)

CRATAEGUS

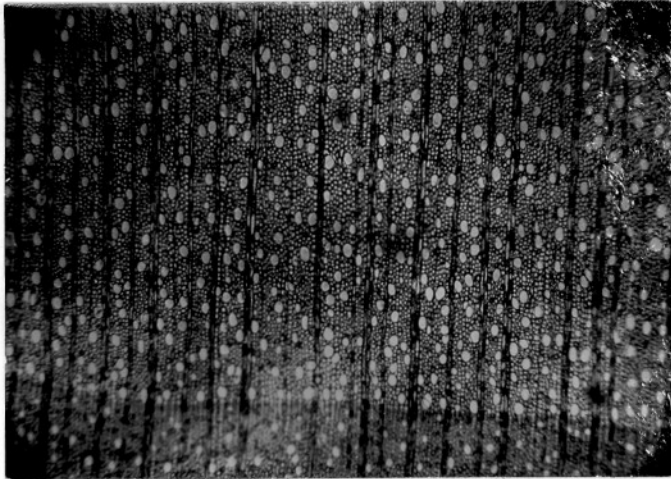
Rosaceae

C. monogyna.

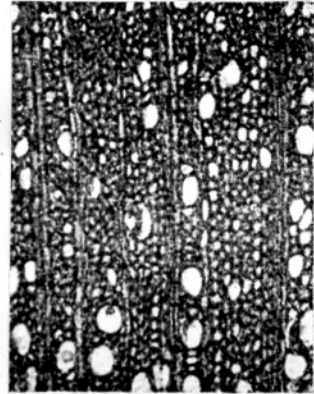


CRATAEGUS

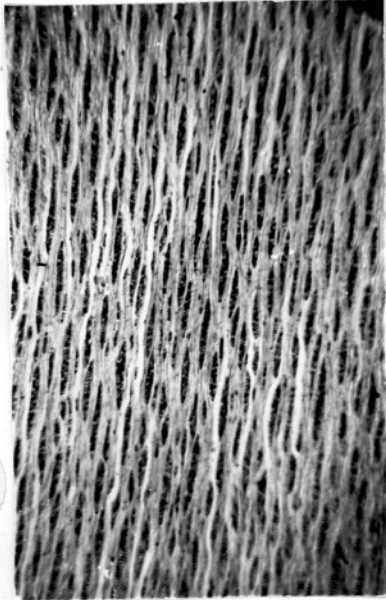
Rosaceae 75



C. monogyna Jacq.

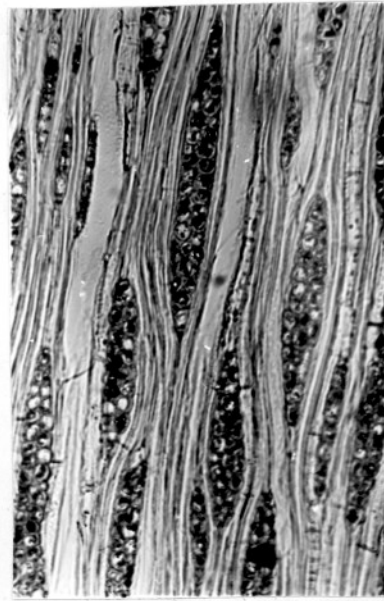


10. *Crataegus azarolus* L.



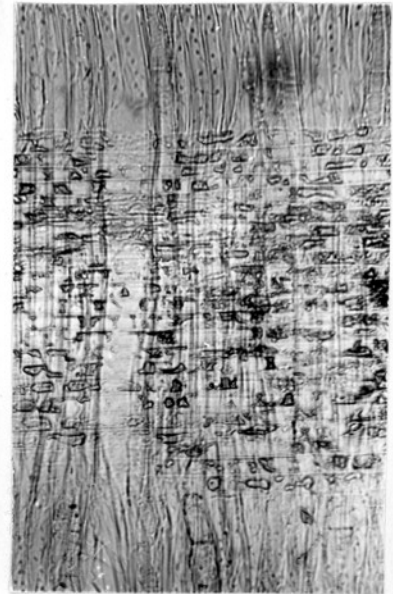
C. monogyna

5/27



C. monogyna

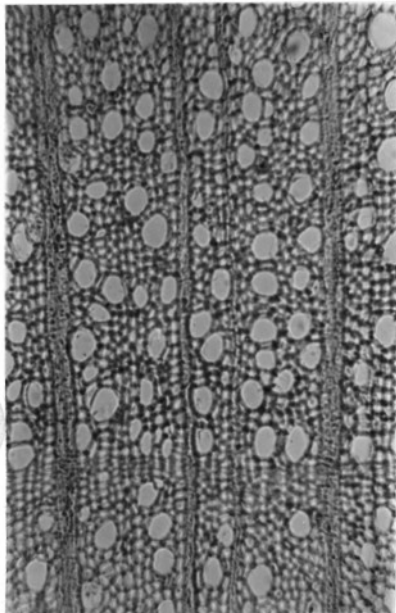
5/4



C. monogyna

5/15

CRATAEGUS



Crataegus sp.

9/5