

CORYLUS

Vessels small to very small (50-100 μ but may be 25-50 μ mean tangential diameter), typically with numerous multiples of 4 or more cells, especially in late wood, the multiples of small vessels in the late wood sometimes merging into radial groups of tracheids sometimes in radial pattern. Usually 15-50 per sq. mm. Spiral thickening? Perforation plates predominantly scalariform, with fewer than 20 bars. Intervascular pitting alternate and moderately large; pits to ray and wood parenchyma similar to the intervascular pitting, but with some simple and larger pits; sometimes unilaterally compound; sometimes tending to be limited to the marginal rows of the rays as in Salicaceae. Mean member length 0.5-0.8 mm.

Parenchyma apotracheal, rather sparse, as cells scattered among the fibres and along the ring-boundaries. Strands usually of 8 cells.

Rays up to 2 or 3 cells wide, but of more cells where aggregated; uniseriate numerous, composed wholly of procumbent cells or with single marginal rows of square cells; commonly aggregated; 10-17 rays per mm. Slightly heterogeneous (Kribs's Type II B), with 1 marginal row of square cells. (Inst. slide in one case ray consists of 2 rows of square marginal cells with no procumbent rows between them and in another place a double row of square marginal cells at one end of ray). (Aggregate rays fairly numerous but not very large, mainly only 2 cells or sometimes 3 wide in Inst. slide).

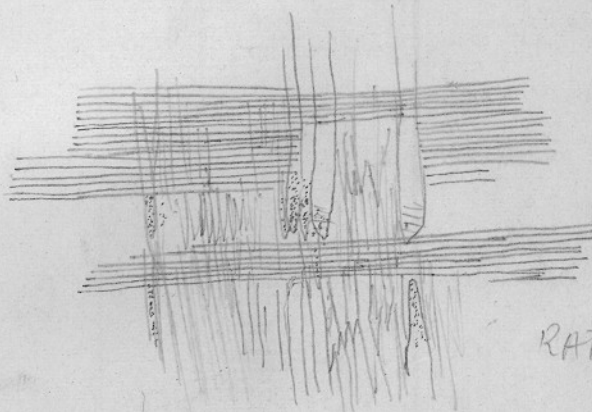
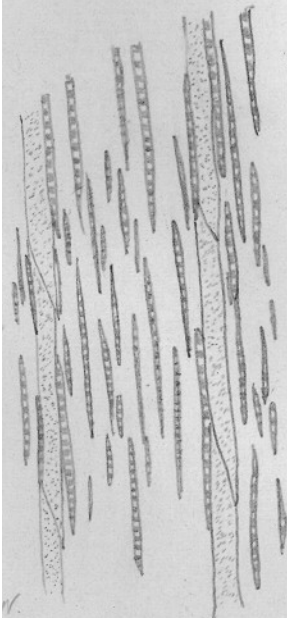
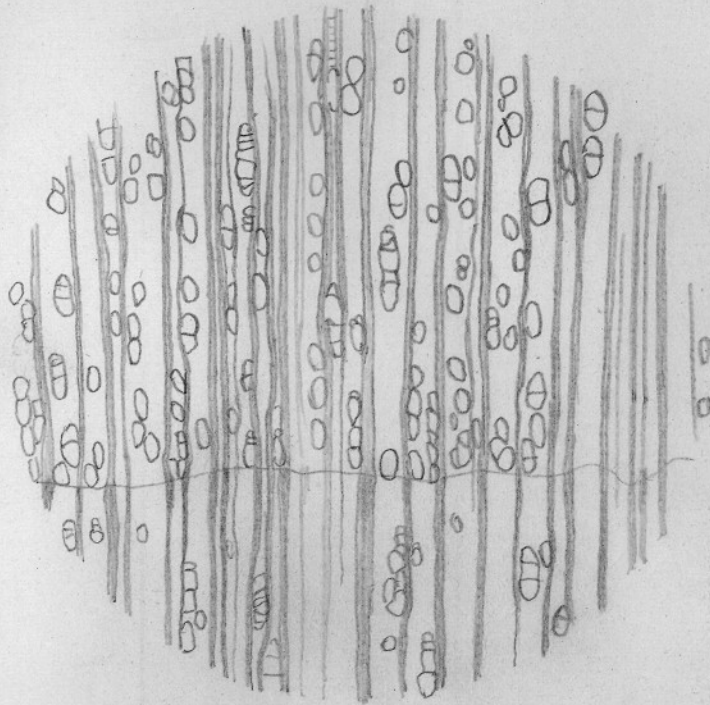
Fibres. With rather few pits, which tend to be more abundant on radial than on tangential walls, the pits with very small borders. Mean length 0.9-1.6 mm.

Tracheids occasionally associated with late wood groups of vessels;

CORYLUS

Corylaceae

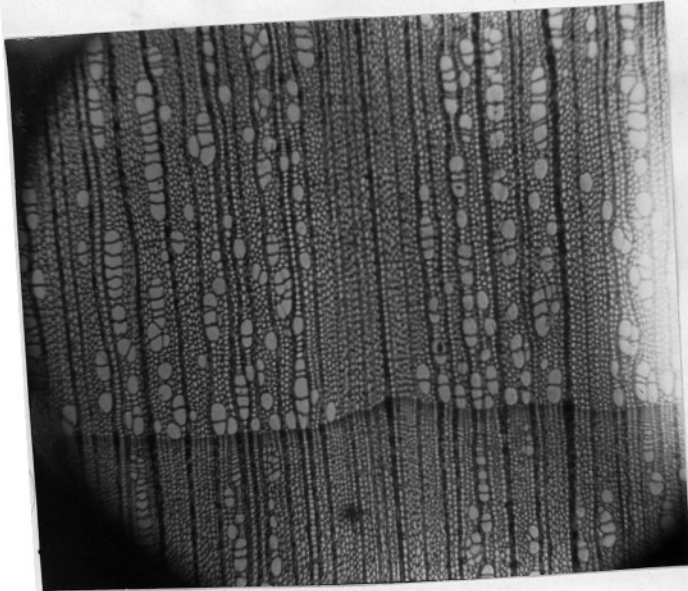
C. avellana L.



RAD.

CORYLUS

Corylaceae 17

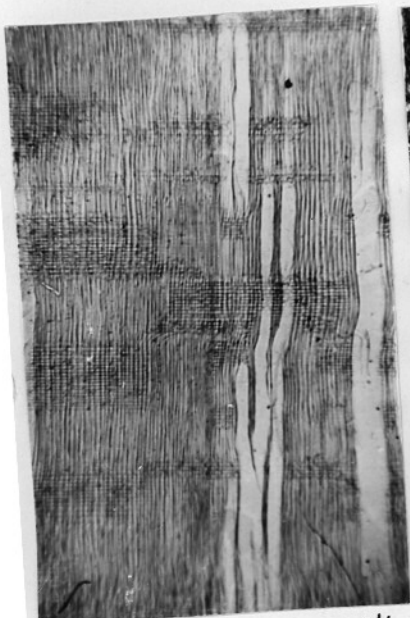


C. avellana L.



C. avellana

4/5



C. avellana

4/6



C. avellana

4/35



C. avellana

4/36

CORYLUS



C. Orlacton J.

14/15A



C. Orlacton J.

14/17A