

CORIARIA

Coriariaceae

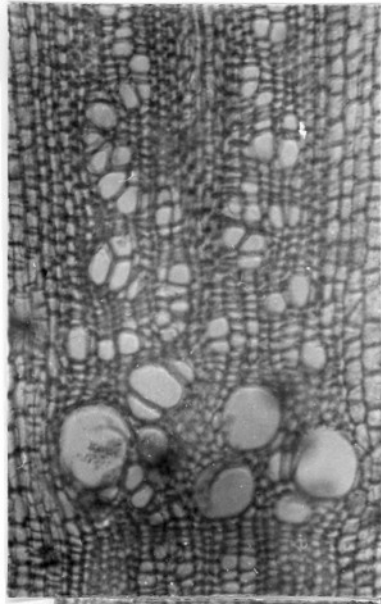
Vessels small (mean tangential diameter less than 100 μ); mostly solitary or mostly in multiples and clusters that often extend tangentially; occasionally ring-porous. Perforations simple. Intervascular pitting alternate and small; often with coalescent apertures; pits to ray and wood parenchyma similar, sometimes with a few oblong pits. Mean member length about 0.2 mm.

Parenchyma paratracheal, about the vessel groups and often linking them; rather sparse in species with mostly solitary vessels, forming broad, irregular confluent bands in others. Fusiform cells present. Storied.

Rays up to 15 or more cells wide and often more than 4 mm. high; uniseriate absent; composed entirely of square to upright cells; with sheath cells and crystals.

Fibres with simple pits; mean length about 0.6-0.8 mm.

CORIARIA



C. myrtifolia

20/36 + 21/0