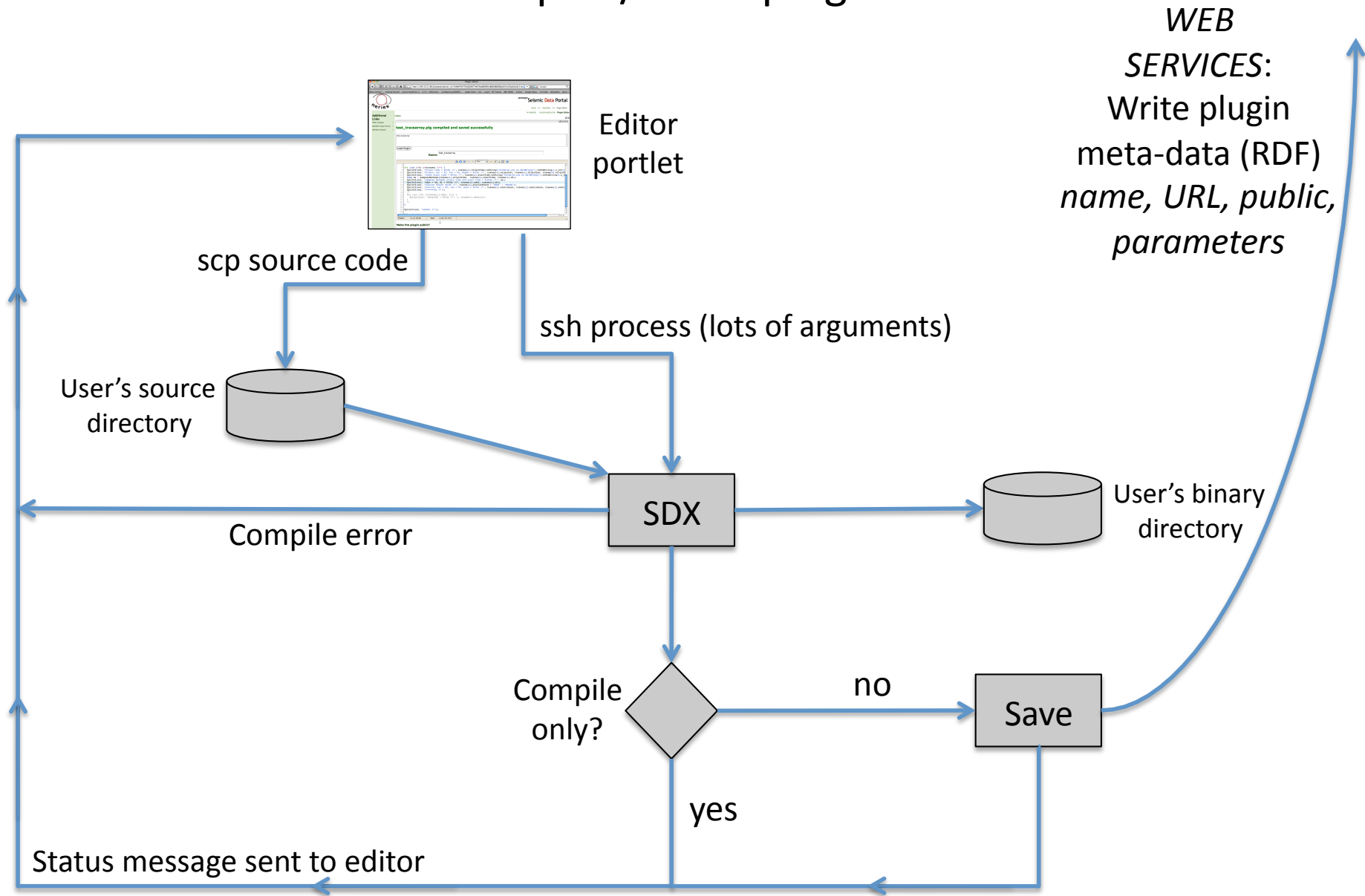


Back-end application utilities & infrastructure

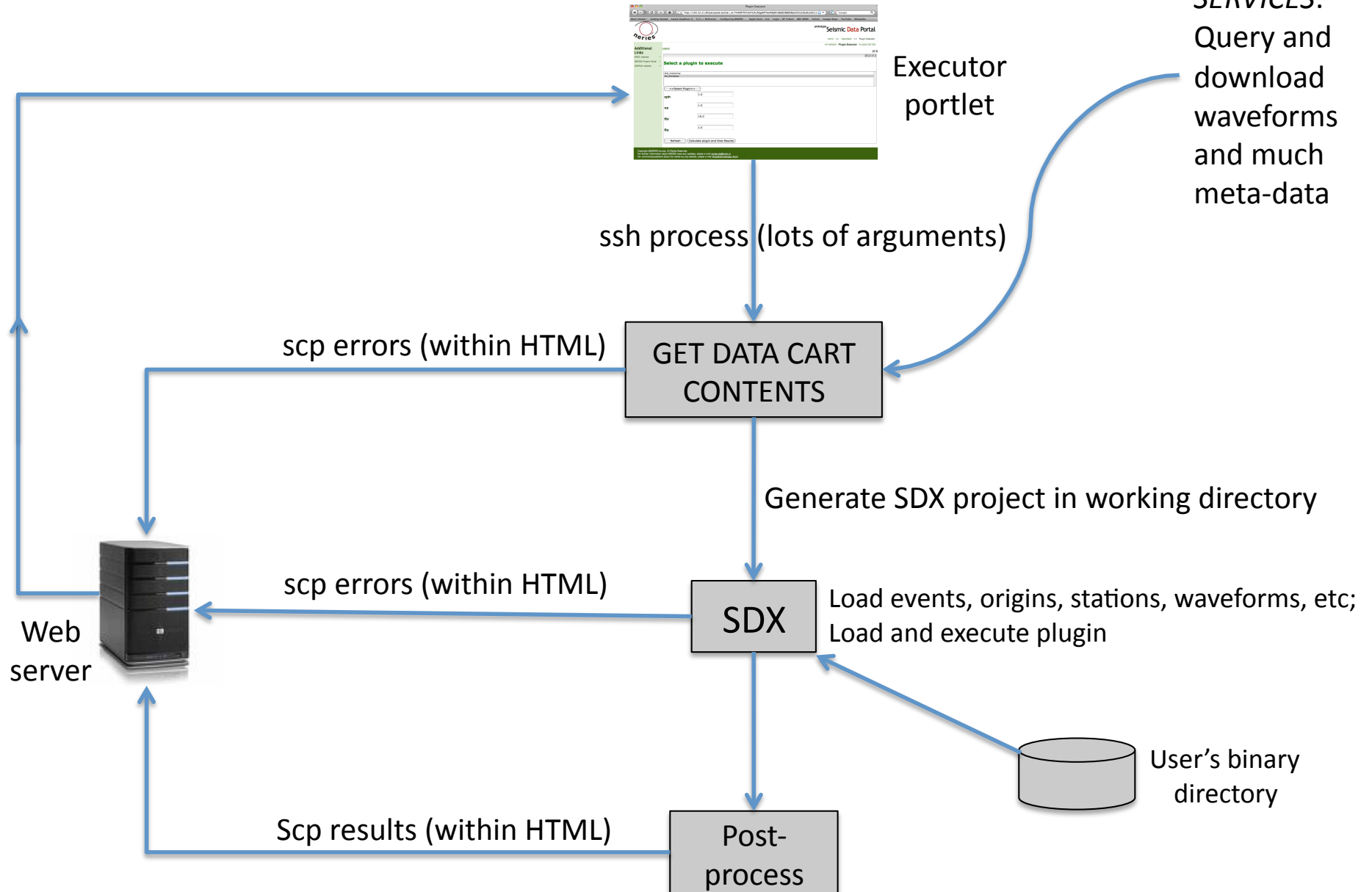
- Running on linux platform
- All communications from portlets use ssh / scp
- All software installed under a single user account
- Plugins are built, stored and executed on the same machine
- Plugins are built & executed by *SDX*

Compile / build plugin

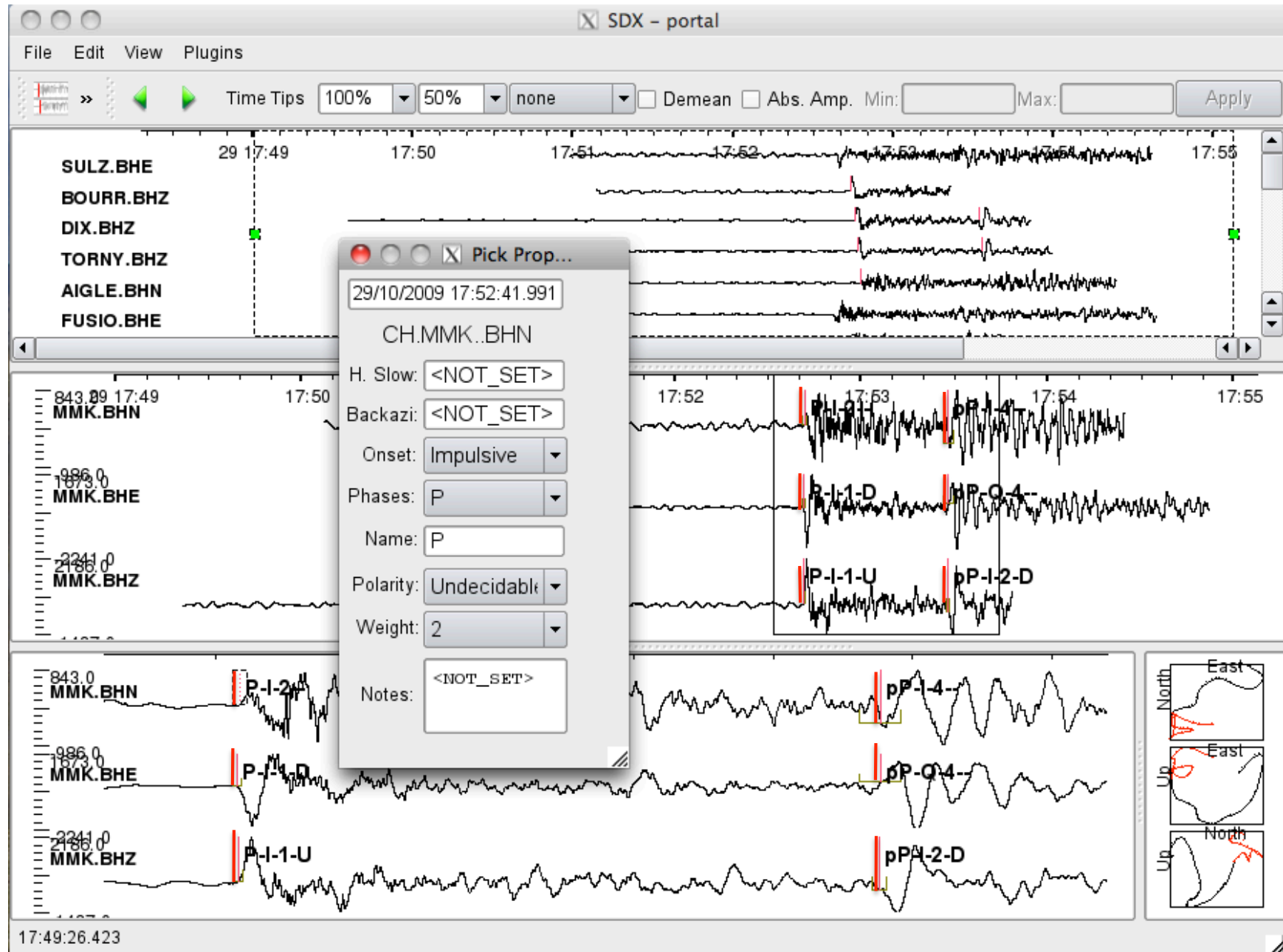


Execute Plugin

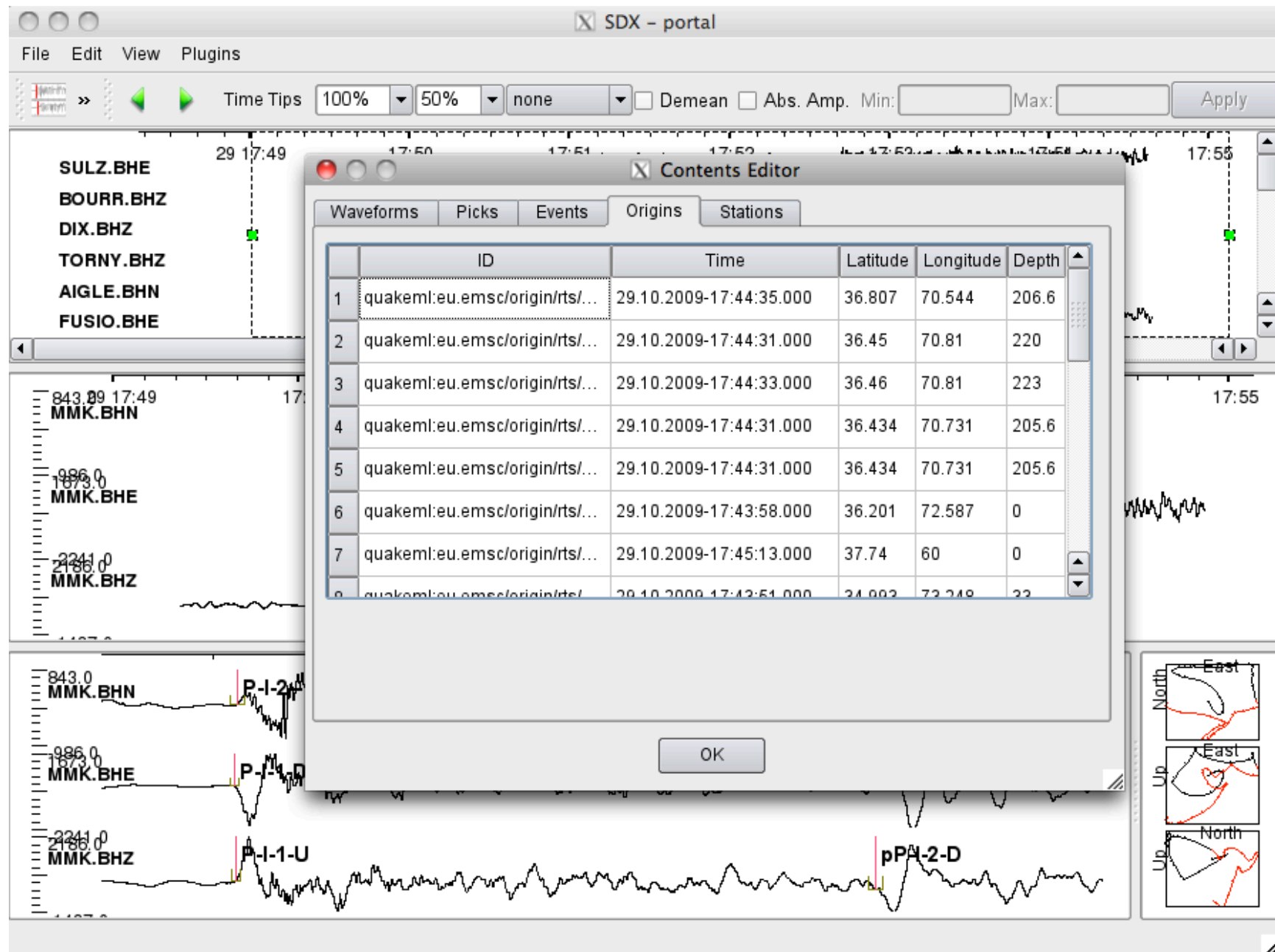
WEB SERVICES:
Query and download waveforms and much meta-data



SDX – desktop instance



SDX – project contents (generated from NERIES user cart)



Issues that need to be addressed

- Grid-enable RapidSeis
- Improve provenance of data & processing (audit trail)
- Waveform data caching
- UI controls to add plugin parameters
- Better plugin API
- Tighter security
- Image creation within SDX
- Type checking of input parameters
- Only a few plugin authors, many plugin users
- Shared plugin code... templates for new plugins

Future possibilities?