

CORDIA

Boraginaceae

Vessels medium to large (up to more than 200 μ mean tangential diameter) in some species; nearly all solitary in some species; fewer than 5 per sq. mm in some species. Ring-porous or semi-ring-porous in some species. Perforations simple, with wide rims and often nearly horizontal; a few reticulate plates occur in some species, e.g. *C. myxa*. Intervascular pitting alternate, medium-sized, and often with coalescent apertures, particularly in *Cordia*; pits to ray and wood parenchyma usually similar to the intervascular pitting but with some elongated pits in *Cordia*. Tyloses often abundant. Mean member length 0.15-0.5 mm.

Parenchyma very variable in type, diffuse, aliform and confluent in some species, and in broad regular bands in some others; single crystals sometimes present. Strands usually of 2 cells, with moderately numerous fusiform cells in some species, e.g. *C. holstii* and *C. macrostachya*. Storied in some species e.g. *C. dichotoma*, *C. gharaf*, *C. myxa* and *C. suaveolens*.

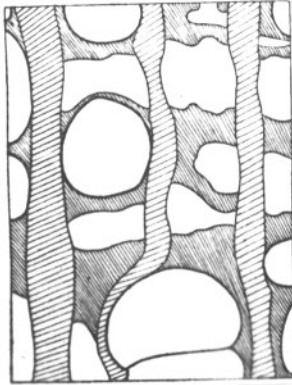
Rays mostly up to 4-6 cells wide, and up to 10 cells in some species. Often about 1 mm high or slightly more; uniseriate rays typically very few or lacking, composed of both procumbent and upright cells; 3-10 rays per mm, not more than 4 per mm in some species; heterogeneous (Kribs Type IIB), with 1-3 marginal rows of square or upright cells in most genera, homogeneous (Kribs Type II) in some species; sheath cells common. With crystals in the ordinary cells in a few species and sometimes with several crystals per cell or crystal-sand in *Cordia*.

Fibres with simple pits, the pits more numerous on the radial than on the tangential walls. Septate in some species. Walls thin to thick. Sometimes storied in *Cordia*, e.g. *C. suaveolens*. Mean length 0.7-1.9 mm.

Intercellular canals, small, of the traumatic type often present.

CORDIA

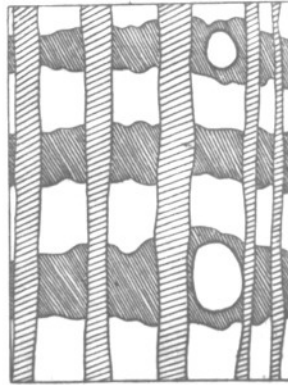
Boraginaceae



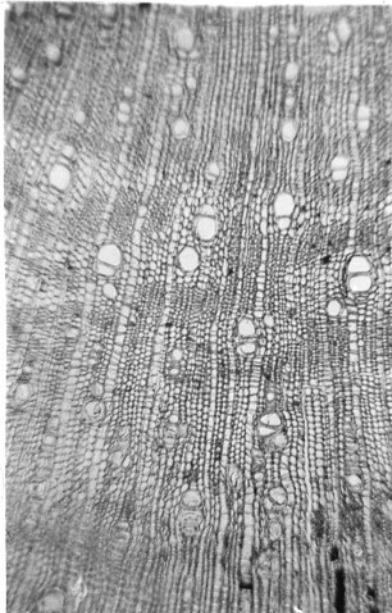
C. fragrantissima Kurz.



Calliodora
Cham.

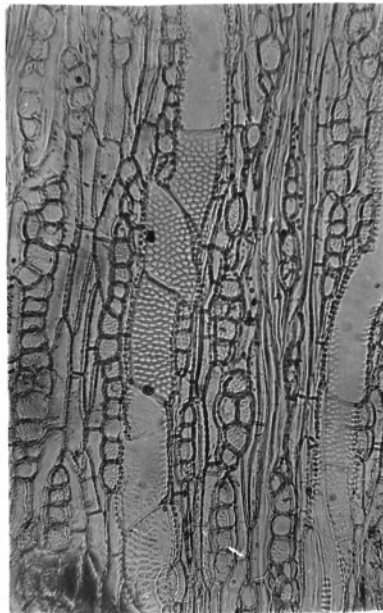


C. obliqua Willd.



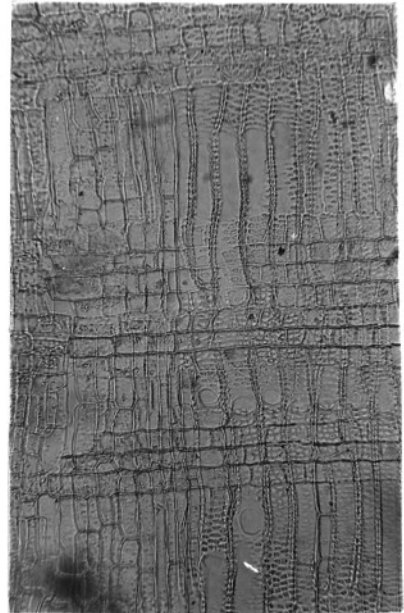
C. sharef.

12/15



C. sharef.

12/16

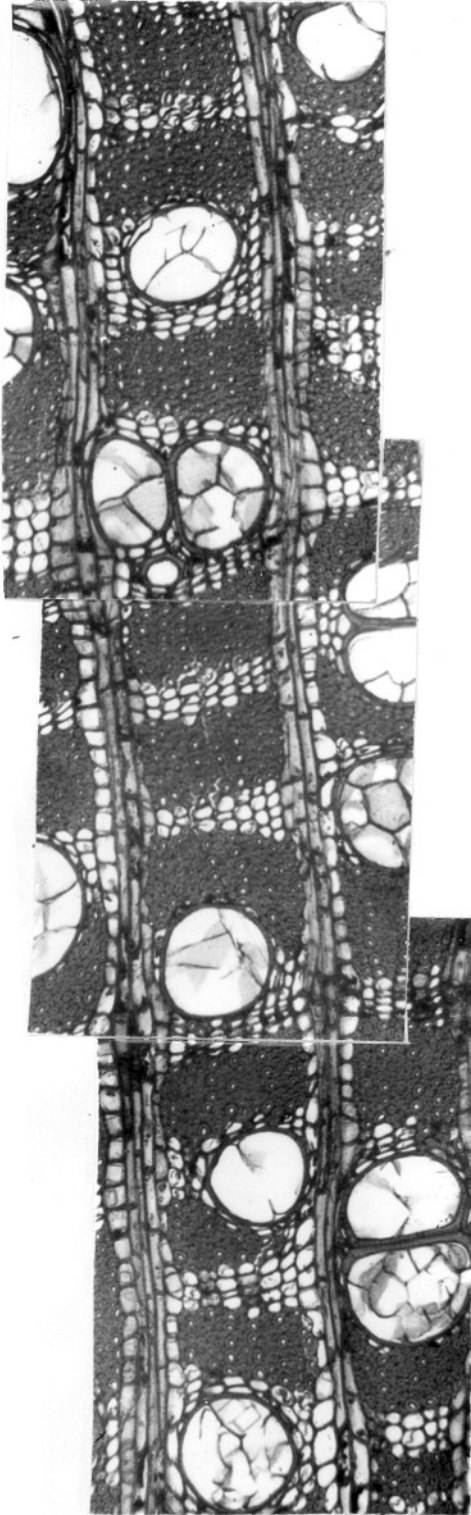


C. sharef.

12/17

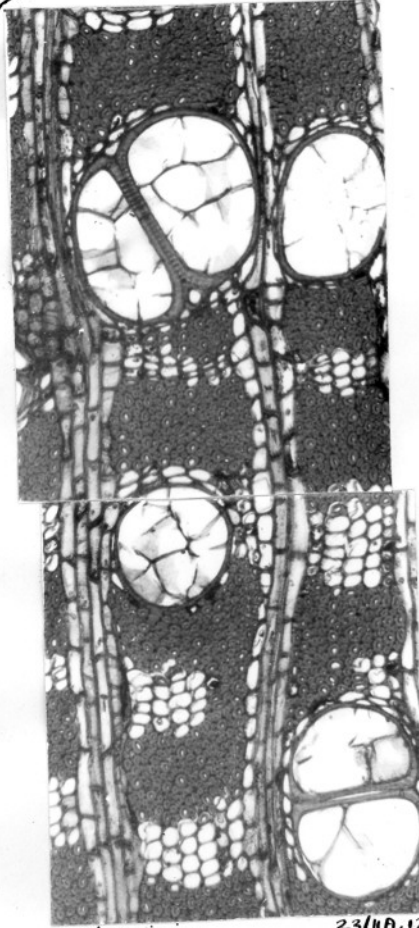
Boraginaceae

CORDIA



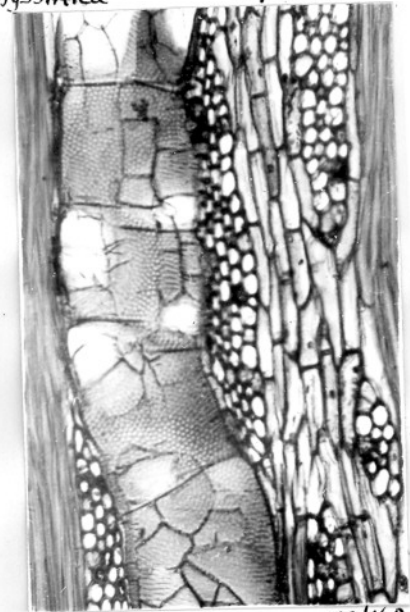
C. abyssinica

23/13A
14A
+15A



C. abyssinica

23/11A, 12A

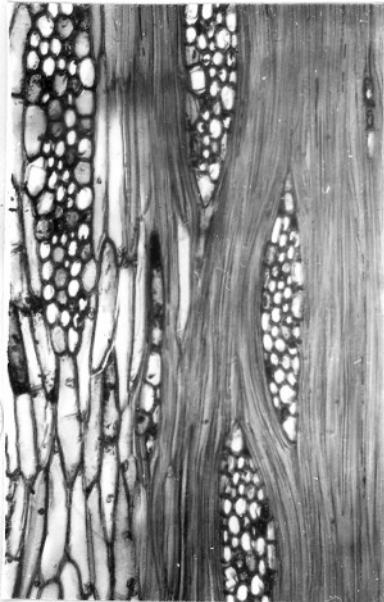


C. abyssinica

23/16A

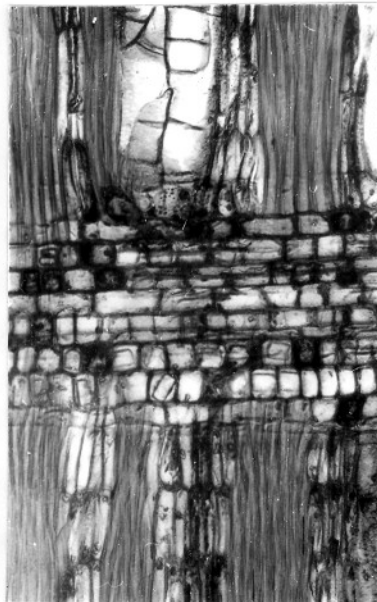
CORDIA

Boraginaceae



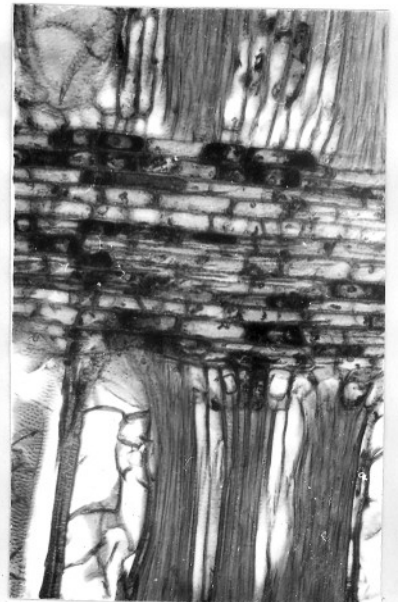
C. abyssinica

23/17A



C. abyssinica

23/18A



C. abyssinica

23/19A